

Connecting to smartdirector's Integrated Dell Remote Access Controller (iDRAC) for downloading system logs

Table of Contents

| | |
|---|----------|
| <i>INTRODUCTION:</i> | 3 |
| <i>PRE-REQUISITES:</i> | 3 |
| <i>a. Identify the model of the smartdirector in place:</i> | 3 |
| <i>b. Network Configuration for laptop/PC:</i> | 4 |
| <i>STEPS:</i> | 5 |

INTRODUCTION:

This document covers instructions for connecting your laptop/PC directly to the smartdirector's **Integrated Dell Remote Controller (iDRAC)** in order to download system logs.

PRE-REQUISITES:

- a. Identify the model of the smartdirector in place:

The instructions for connectivity as well as access to iDRAC is different between the models, hence this is required.

If you have **smartdirector A**, the back panel will look something like this...



Figure 1. Back-Panel of smartdirector A.

If you have **smartdirector B**, the back panel will look something like this...



Figure 2. Back-Panel of smartdirector B.

If you have **smartdirector C**, the back panel will look something like this...

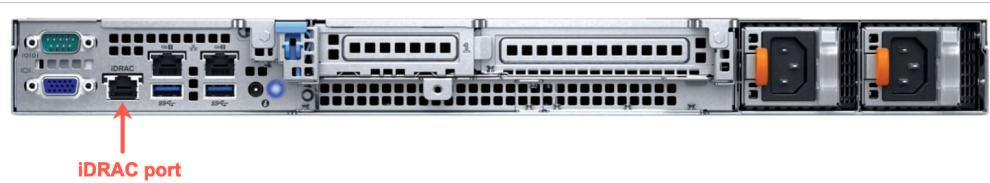


Figure 3. Back-Panel of smartdirector C.

b. [Network Configuration for laptop/PC:](#)

The network configuration parameters for your own laptop/PC will need to map to the model of the smartdirector installed.

For **smartdirector A**, configure your laptop/PC ethernet interface as follows..

- IP Address: 192.168.1.10
- Subnet Mask: 255.255.255.0
- Gateway: 192.168.1.1

For **smartdirector B or C**, configure your laptop/PC ethernet interface as follows..

- IP Address: 192.168.0.10
- Subnet Mask: 255.255.255.0
- Gateway: 192.168.0.1

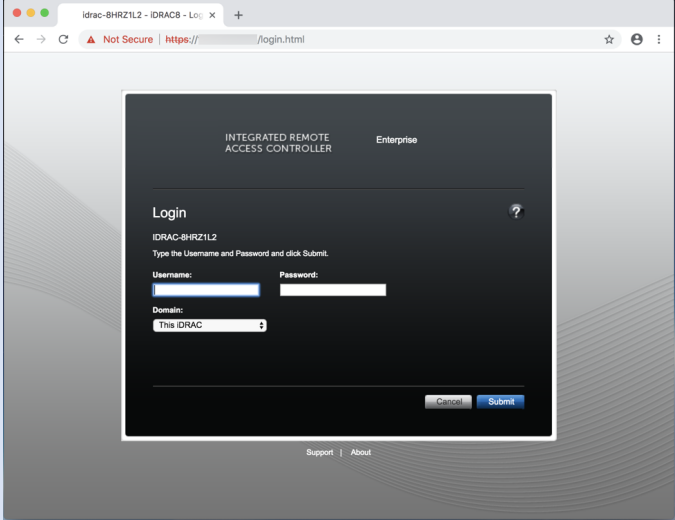
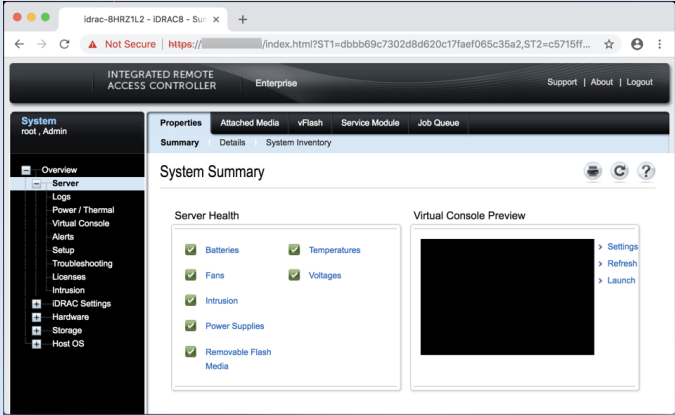
Next, turn **OFF** Wi-Fi on your laptop/PC and connect it directly to the iDRAC port of the smartDirector via an ethernet cable. The iDRAC port is clearly marked on the smartdirector (see Figure 1., Figure 2. and Figure 3. for assistance)

For **smartdirector A**, the iDRAC port has an IP address of **192.168.1.254**. You will need to ping that IP address successfully from the command prompt (or terminal in the case of Mac OS users) before you can proceed to the section that documents the steps to access the web portal.

For **smartdirector B or C**, the iDRAC port has an IP address of **192.168.0.120**. You will need to ping that IP address successfully from the command prompt (or terminal in the case of Mac OS users) before you can proceed to the sections that documents the steps for access the web portal..

Based on a successful ping, you are now ready to launch the web portal of iDRAC on the smartdirector.

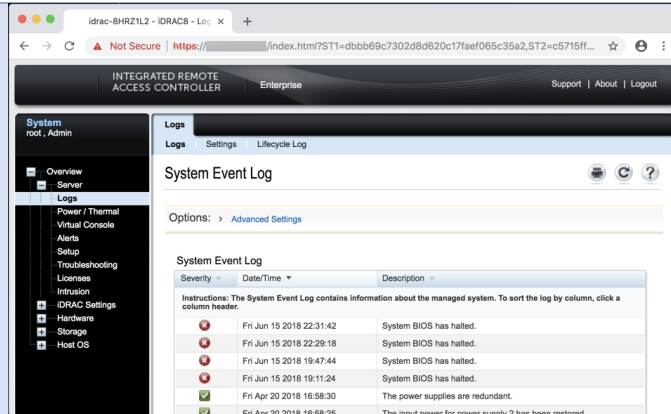
STEPS:

| Steps to follow | This is what you will see |
|--|--|
| <p>Step 1.</p> <p>Open up a web browser and traverse to the following URI.</p> <p>For smartdirector A:</p> <p>http://192.168.1.254</p> <p>For smartdirector B or C:</p> <p>http://192.168.0.120</p> <ul style="list-style-type: none"> The web portal for iDRAC will become visible |  |
| <p>Step 2.</p> <p>The login credentials will also be dependent on the smartdirector model.</p> <p>For smartdirector A:</p> <ul style="list-style-type: none"> Username: admin Password: redwood <p>For smartdirector B or C:</p> <ul style="list-style-type: none"> Username: root Password: calvin <p>The Domain: drop down menu should be “This iDRAC”.</p> <p>Upon a successful login, the System Summary page will be displayed.</p> |  |

Step 3.

From the left-hand side pane, click on **Logs**. This is the first item if the Server menu is expanded.

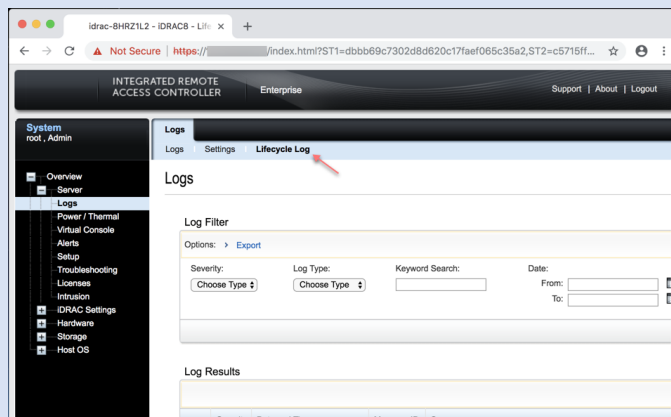
- The **System Event Log** will be displayed



Step 4.

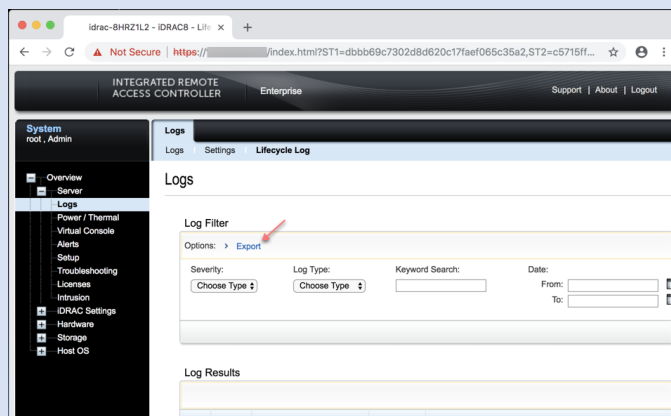
Click on **Lifecycle Log** up on the top bar as directed by the arrow.

- The **Logs** page will appear



Step 5.

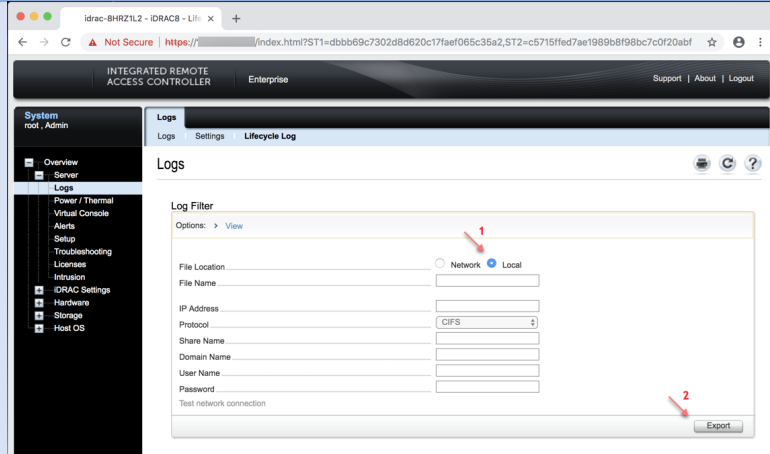
Under the **Log Filter** section, click on **Export**.



Step 6.

The Log Filter section will now show an array of options.

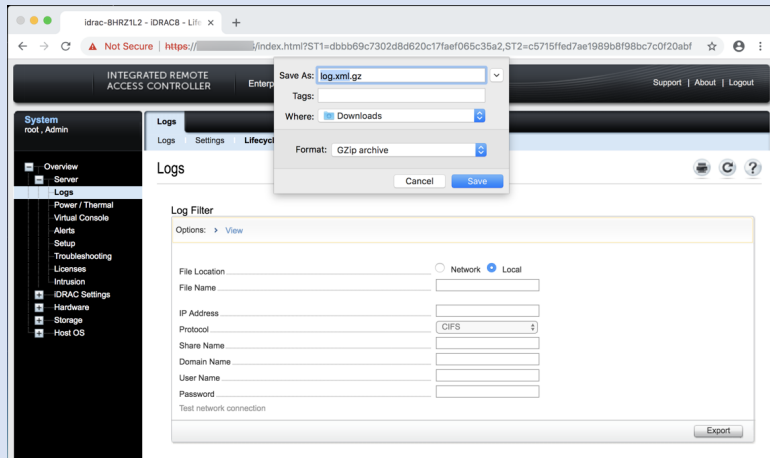
- Select the **Local** radio button (1) and click on the **Export** button (2)



Step 7.

You will be prompted to save the file. You can leave the default name “log.xml.gz” or change it. Make sure to keep the .gz extension as well as the GZip archive format

- The file will be downloaded and saved in the location specified



Step 8.

Confirm that the file has been downloaded to your laptop/PC. You can now **Logout** of the iDRAC portal and disconnect from the smartdirector.